

Bellevue
Public
Schools



Alumni
Spotlight



Barry Temple

Bellevue High, 1970

Welcome to our new Alumni Spotlight column where we shine a light on some of the amazing alumni that have graduated from Bellevue Public Schools!

Barry Temple graduated from Bellevue High School in 1970. Barry has gone on an amazing journey. He wanted to be an animator and was determined to make it happen. His hard work and determination paid off. Barry's journey has led to to work for Hanna Barbera, on The Lord of the Rings animated movie and then on to Walt Disney! We can almost guarantee that you have seen Barry's work somewhere as he worked on Who Framed Roger Rabbit, The Little Mermaid, Beauty and The Beast, Aladdin, The Lion King, Mulan and many more!

Barry recently took some time to answer a few of our questions.

What schools did you attend in Bellevue?

Like many families living in Bellevue, we were military. My father was a B-17 pilot in World War Two. After the war, he studied architecture and arrived at Offutt around 1951 or 1952. Since he was a civilian employee for Strategic Air Command, we weren't transferred out. So unlike most military related families, my siblings and I grew up in Bellevue. I attended Betz, Belleaire, and Ft. Crook elementary schools, followed by Mission Junior High and Bellevue Senior High where I graduated in 1970.



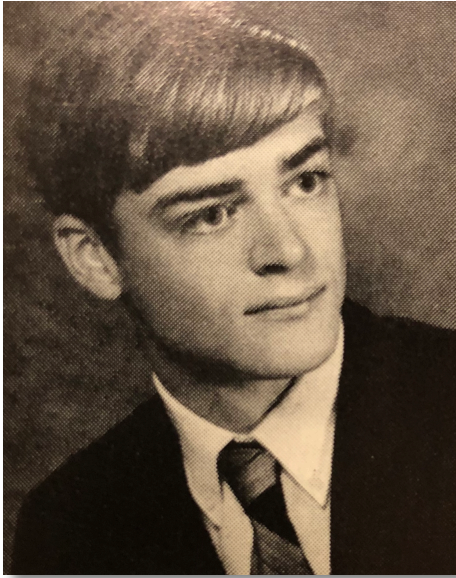
Mr. Lloyd Boilesen
BHS Principal

Could you name one of your favorite teachers and share why they were your favorite?

My long term memory is very poor, so I can't recall many teachers by name. I would like to single out our principal, Lloyd Boilesen. He came across as Jack Webb from Dragnet, buzz hair cut and all. He was an old school disciplinarian- he didn't tolerate any violation of the code of conduct that was established at that time. If any student arrived with the intent of disruption or disrespect toward the faculty, Mr. Boilesen brought the hammer down on that unfortunate individual. As a result, we were allowed to receive a safe private school quality education in a public school.

I eventually had many opportunities to observe Mr. Boilesen around town and with his family. That is when I discovered he was Clark Kent- with two opposite personalities. In reality he was a kind, soft spoken, loving husband and father, with a dazzling smile and a thunderous laugh. He was one of the best actors I ever met. I kept his secret because I knew he needed to keep that tough as nails high school principal character that he created in order to keep 2,000 students in check. Imagine the pressure that was placed upon him from the board of education as well as from the parents and faculty, in a school system with students continually transferring in and out. I wish I had the opportunity to

personally thank him for his service to our school as well as the entire community.



Barry in his Senior Year

Did you have a favorite place to hang out - either at school or in town?

It would be around the gymnasium. I was on the boys gymnastics team as well as in the band. Back then the band room was located by the gym. I heard the band room was relocated to the opposite end of the school at some point.

Did you have other family that graduated from BPS?

All of my siblings went through the Bellevue public schools. My brother Bob graduated in 1962, my brother Randy in 1969, my sister Sharee in 1974, and my sister Tammy from Bellevue West in 1978. All of them are still in the Omaha/ Bellevue area.

Did you always want to be an animator? When did you know that this is what you wanted to do?

I knew I had a flair for drawing and painting even as a child. I aspired to work in the visual arts in some manner, and also make a living at it (which is never easy). The term "starving artist" is no myth. When I was around 16 I saw Disney's "Fantasia", and from that moment on I was determined to become an animator at Disney, even though I had no idea how the process worked.

Tell us a little about how you went from being a student in Bellevue to an animator for Hanna-Barbera.

I knew if I was going to pursue a career in the movie and television industry I would have to set all fears aside, point my car toward Los Angeles, and chase that crazy dream. When a person is around the age of 20, you have a naive expectation that anything is possible. Looking back from the distance of time and history, I would not have made that

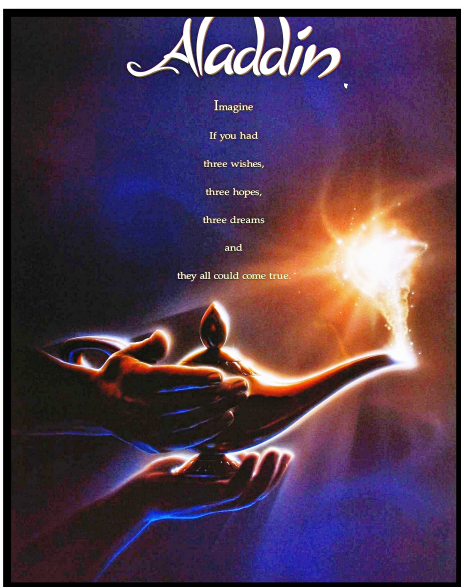




choice a few years later because I would have been too mature and practical to place myself into a situation with no contacts, no support, and no knowledge relating to the animation arts. I soon discovered I would need to study fine art drawing, not cartooning, in order to break into the industry. For the next two or three years, I worked in factory jobs by day, and took drawing classes at night. Or I would study art in the daytime, and work factory jobs in the evening. In addition, I took classes at the Motion Picture Screen Cartoonists union location, and began to make contacts with professional animators and study under them. I eventually reached the point where I was hired to animate on television cartoons for Hanna-Barbera in the mid 1970's.

How did you end up with Disney?

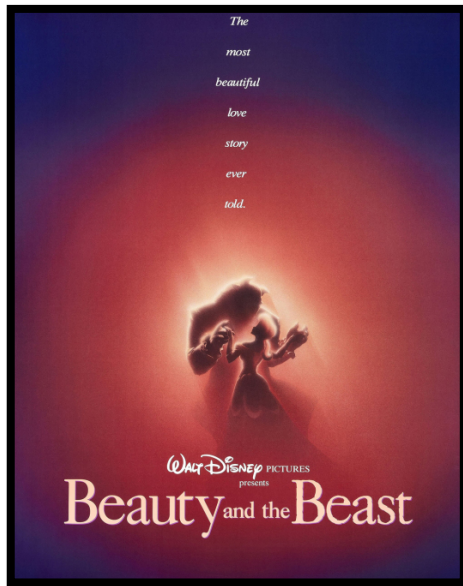
Even though I enjoyed working at Hanna-Barbera, I considered it a stepping stone to eventually join the Disney animation studio. I took more advanced animation classes at the Animation Union given by veteran Disney animators. They showed my work to the Disney review board, and I was offered a position on their animation staff in 1980.



What is something you could share about the job of an animator that you think the general public might not know?

We don't want the audience to know about the tedious process required to create an animated movie. We want them to believe what they are seeing and hearing is real. Lions can talk, they can feel emotions. They make choices such as supporting each other or resort to betrayal. They can conspire against each other, or feel remorse and redeem themselves. In other words, they possess human emotions for the better or worse. In order to make the viewer feel personally involved, we as artists must create the "Illusion of Life". Unlike live action movies which are filmed in real time, animators have to create the illusion of a story unfolding in real time. But in reality we had to create movement at the

rate of 24 drawings per second. If there are two characters on screen it becomes 48 drawings per second. That's why it would typically take 4 or 5 years to create a single full length movie.



Do you have a work of yours that you are most proud of?

I never created anything by myself. Everything I ever created was shared with a community of hundreds of people working collectively. We all experienced the same joy when "Beauty and the Beast" received a best picture nomination from the Academy of Motion Picture Arts and Sciences, of which I have been a member since 1993.

Roughly how many animated TV shows and movies have you worked on?

"The Internet Movie Database" would have a nearly complete list, but some of the most familiar television series would include "Scooby Doo", "The Super Friends" (which is basically The Justice League), and a "Godzilla" show of some kind. Some of the most notable Disney features were "The Little Mermaid", "Beauty and the Beast", "Who Framed Roger Rabbit", "Aladdin", "Pocahontas", and "Mulan". I was at Disney for 23 years so it's a pretty long list.

Do you have a favorite character that you worked on?

I would say Flounder from "The Little Mermaid". Even though it has been nearly 30 years since its release, I can still walk down an aisle at Target or Walmart and see Ariel and Flounder merchandise on the shelves. That is a true measure of a classic movie.

What message would you like to give to current students in Bellevue Public Schools?

Links:

<https://www.youtube.com/watch?v=iGXAbyO6big>

https://www.imdb.com/name/nm0854675/?ref_=fn_al_nm_1

http://disney.wikia.com/wiki/Barry_Temple

We hope you enjoyed our Alumni Spotlight! This is a recurring column on the Alumni Association Facebook Page. If you know of a Bellevue graduate that we should shine the spotlight on, please reach out to us and they will be considered for a future column. Continue to invite your friends and family to Like and Follow our Alumni Association page: <https://www.facebook.com/BPSAlumni>